

# WESTERN CERAMIC COLORS

Manufactured by **CLAY PLANET**

1775 Russell Avenue Santa Clara, CA 95054

Phone 408-295-3352 Fax 408-295-8747

Western Glazes have been produced exclusively in California for over 60 years. Every batch is tested for quality before bottling. Our high quality glazes, underglaze, engobes, and oxide washes, are in use worldwide as a standard for ceramic excellence.

Guide Rev. Jan 2022



Western Glazes are available through any of our proud distributors.

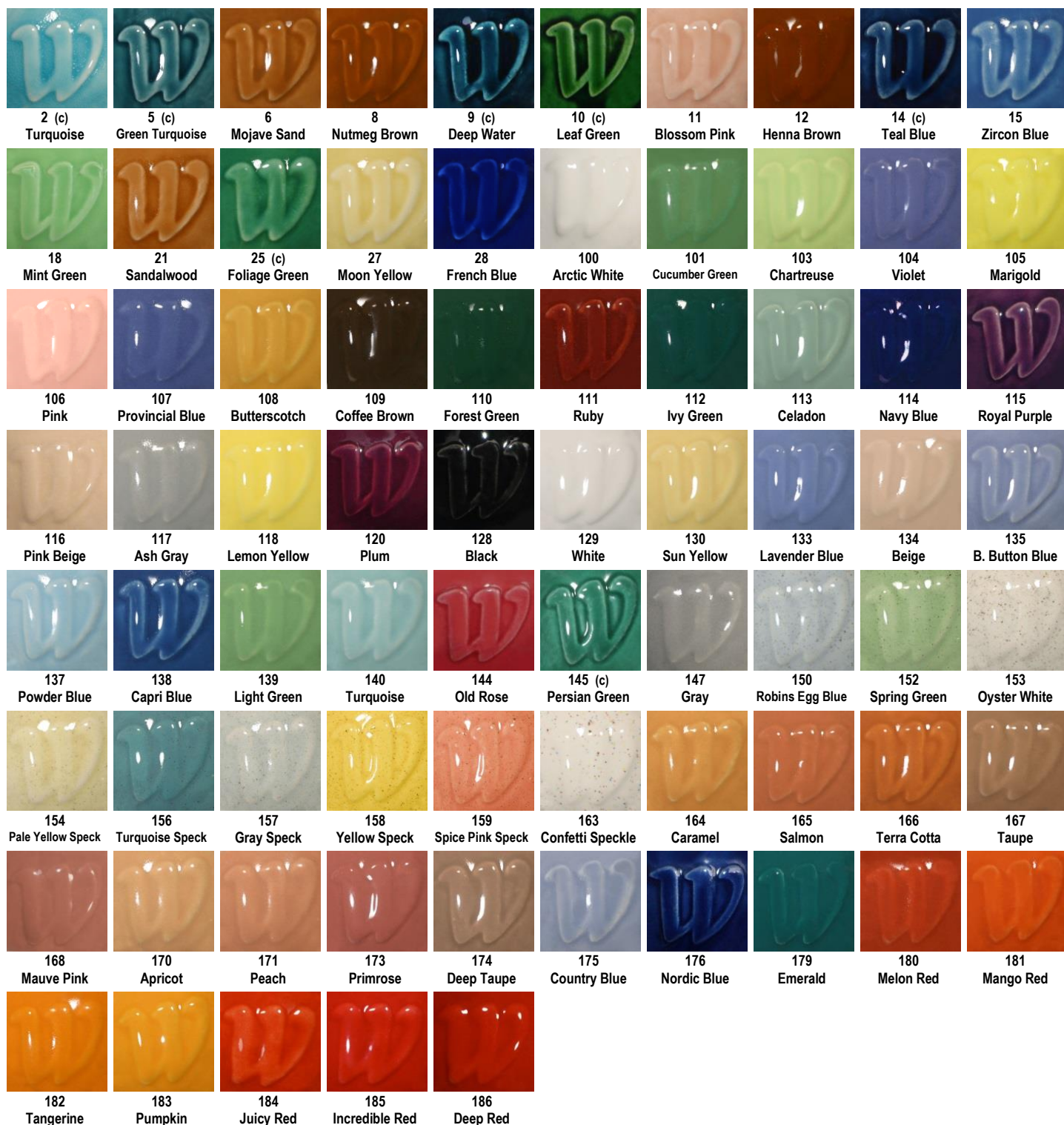
Visit [www.WesternGlaze.com](http://www.WesternGlaze.com)

For use details, pricing, Safety Data Sheets (SDS), and product information.

Unless otherwise noted (\*) (c) Western Ceramic Glaze, Engobe and Underglaze is certified Non-Toxic, Lead-Free, Food Safe, and safe for use in K-12 classrooms. See Labeling Guide on last page for details.

## COLOR GUIDE

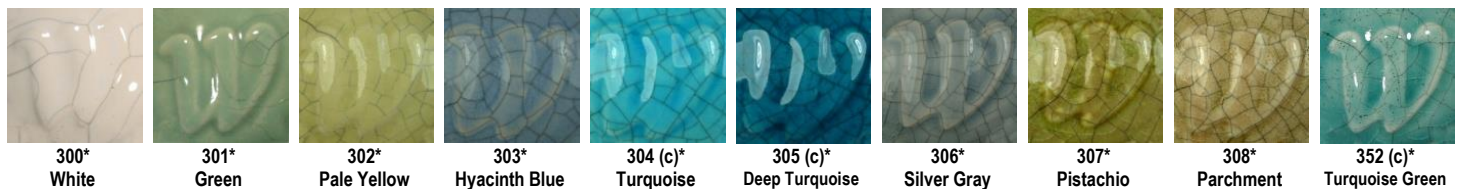
**Low Fire Gloss Glazes – Cone 05** (Lead-Free – Non Toxic – For colors marked with a (\*) or (c) refer to glaze label guide)



## Low Fire Satin-Matt Glazes – Cone 05 (Lead-Free – Non Toxic – For colors marked with a (\*) or (c) refer to glaze label guide)



## Low Fire Gloss Crackle Specialty Glazes – Cone 05 (Lead-Free – Safe for K-12 – Crackle not recommended for food or drink)



## Low Fire Specialty Art Glazes – Cone 05 (Lead-Free – Non-Toxic - Safe for K-12 use)



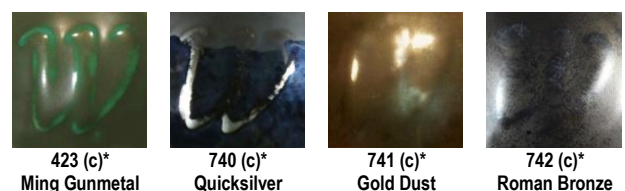
## Low Fire Transparent Clear Glazes – Cone 05

(Lead-Free – Non Toxic - Safe for K-12 use)



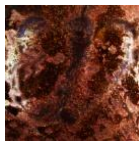
## Low Fire Specialty Metallic Glazes – Cone 04

(Lead-Free – Safe for K-12 use)





## Low Fire Specialty Aventurine Glazes – Cone 05 (Lead-Free – Non-Toxic - Safe for K-12 use)



750  
Golden Embers

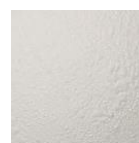


751 (c)  
September Gold

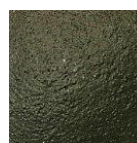


752  
Sunstone

## Low Fire Specialty Lava & Crawl Glazes – Cone 05 (Lead-Free – Non-Toxic - Safe for K-12 use)



797 \*  
White Pingo



799 \*  
Black Pingo

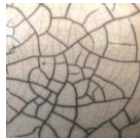


770 \*  
Ice Floes

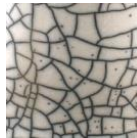


771 \*  
Lava Skin

## Raku Low Fire Specialty Glazes – Cone 06 (Lead-Free - Not for food or drink)



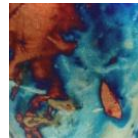
R-1\*  
Clear Crackle



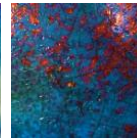
R-2\*  
White Crackle



R-3 (c)\*  
Copper Luster



R-4 (c)\*  
Rainbow Matt



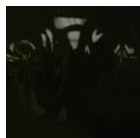
R-5 (c)\*  
Turquoise Blue

## Specialty Glaze Flux

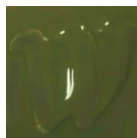


FL-1  
Opal Flux

## Underglaze – Semi Opaque – Cone 06-10 (Lead-Free – Non-Toxic - Safe for K-12 use) Shown glazed with clear glaze.



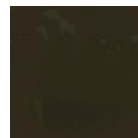
UG-1  
Black



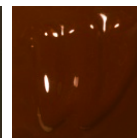
UG-2  
Medium Gray



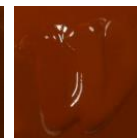
UG-3  
Silver Gray



UG-4  
Coffee Brown



UG-5  
Redwood



UG-6  
Mahogany



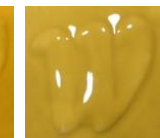
UG-7  
Light Brown



UG-8  
Burnt Orange



UG-9  
Golden Yellow



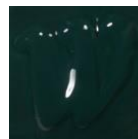
UG-10  
Ochre



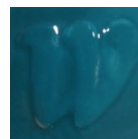
UG-11  
Banana



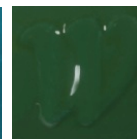
UG-12  
Bright Yellow



UG-13  
Emerald



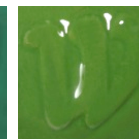
UG-14  
Deep Turquoise



UG-15  
Dark Green



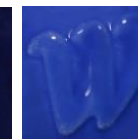
UG-16  
Irish Green



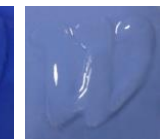
UG-17  
Light Green



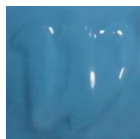
UG-18  
Ultramarine Blue



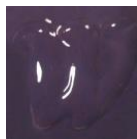
UG-19  
Royal Blue



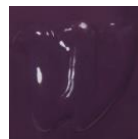
UG-20  
Light Blue



UG-21  
Sky Blue



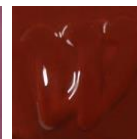
UG-22  
Plum



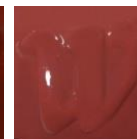
UG-23  
Purple



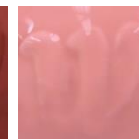
UG-24  
Orchid



UG-25  
Crimson



UG-26  
Deep Rose



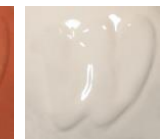
UG-27  
Bright Pink



UG-28  
Melon



UG-29  
Peach



UG-30  
White



UG-31  
Melon Red



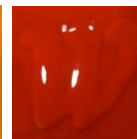
UG-32  
Mango Red



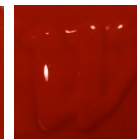
UG-33  
Tangerine



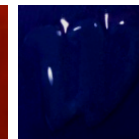
UG-34  
Pumpkin



UG-35  
Fire Engine Red



UG-36  
Pomegranate



UG-37  
Indigo Blue



UG-38  
Key Lime



UG-39  
Oasis Teal



UG-40  
Violet



UG-41  
Persimmon

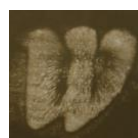
## Oxide Wash - Cone 06-10 (Lead-Free – Non Toxic – For colors marked with a (\*) or (c) refer to glaze label guide)



OX-1  
Red Iron



OX-2 (c)  
Iron &  
Manganese



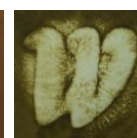
OX-3  
Terra Firma



OX-4 (c)  
Manganese



OX-5  
Golden Rutile



OX-6 (c)  
Copper Black



OX-7 (c)  
Dark Copper  
Blue



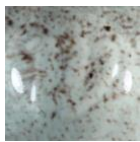
OX-8 (c)  
Cobalt

Oxide Washes can be used under or over glazes, or by themselves. They are stable and do not rub off when fired cone 06 or higher. Washes can be absorbed by glaze.

**Mid Fire Stoneware Glazes – Cone 5/6** (Lead-Free – Non Toxic – For colors marked with a (\*) or (c) refer to glaze label guide)



4500  
Clear Gloss



4501  
Robins Egg  
Blue



4502  
Peach Gloss



4503  
Mushroom Art



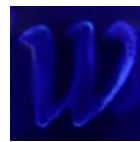
4504  
Dove Gray  
Speck



4505  
Coral Spice  
Speck



4505  
Bubble Gum  
Pink



4507  
Midnight Blue



4508  
Spanish Moss  
Art



4509  
Burgundy Gloss



4510  
Black Gloss



4511  
Light Green



4512  
White Gloss



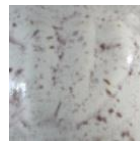
4513 (c)  
Oribe Green



4514  
Apricot Gloss



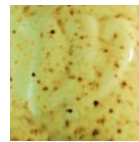
4515  
Rose Gloss



4516  
Chocolate Chip



4517  
Cinnamon



4518  
Oatmeal Speck



4519  
Purple Gloss



4520  
Doeskin Art



4521  
Celadon Gloss



4522 (c)\*  
Gunmetal Art



4523  
Plum Gloss



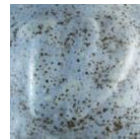
4524  
Desert Mist Art



4525  
Dusk Blue



4526  
White Matt



4527  
Bluestone Matt



4528  
Moss Agate Art



4529  
Nile Blue Art



4530 (c)  
Autumn Green  
Art



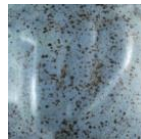
4531  
Corn Silk Yellow



4532  
Mist Blue Art



4533  
Lava Brown  
Matt



4534  
Biscayne Blue  
Matt



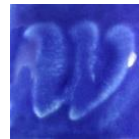
4536  
Pearl Gray



4537  
Magical Mist Art



4538  
Blue Jasper Art



4539  
Cobalt Blue  
Gloss



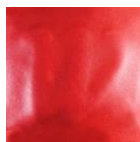
4540  
Pumpkin Gloss



4541  
Cherry Red  
Gloss



4542  
Bright Yellow  
Gloss



4543  
Bright Red Matt



4544  
Pumpkin Matt



4545  
Transparent  
Matt



4546  
Black Matt



4547  
Chartreuse  
Gloss



4548 (c)  
Turquoise  
Peacock Art



4549  
Delta Blue Art



4550 (c)  
Transparent  
Green Celadon



4551 (c)  
Rusty Orange  
Art



4552  
Tahitian Sunset  
Art



4553  
Ironwood Art



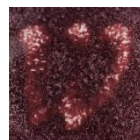
4554 (c)  
Mystical Jade  
Art



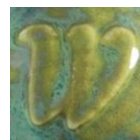
4555 (c)  
Kelp Forest Art



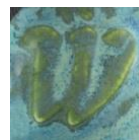
4556  
Ohata Red Art



4557 (c)  
Copper Red Art



4558 (c)  
Green  
Riverstone Art



4559 (c)  
Blue Riverstone  
Art



4560  
Fire Opal Art



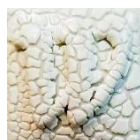
4561  
Sunstone Art



4562  
Aventurine Art



4563 (c)\*  
Egyptian Gold  
Art



4564 \*  
Iceberg Drift



4565 \*  
Volcanic Crust



4566 (c)  
Ultra Turquoise



4567  
Lemonade



4568  
Ultraviolet



4569  
Papaya



4570  
Dragon's Eye



4571  
Wisteria



4572  
Malachite Green  
Matt Art



4573  
Indigo Matt Art



4574  
Dark Star  
Aventurine



4575  
Solar Ruby



4576  
Stardust



4577  
Interstellar



4578  
Lilac Gloss



4579  
Niko Blue



4580  
Stone Gray  
Matt Art



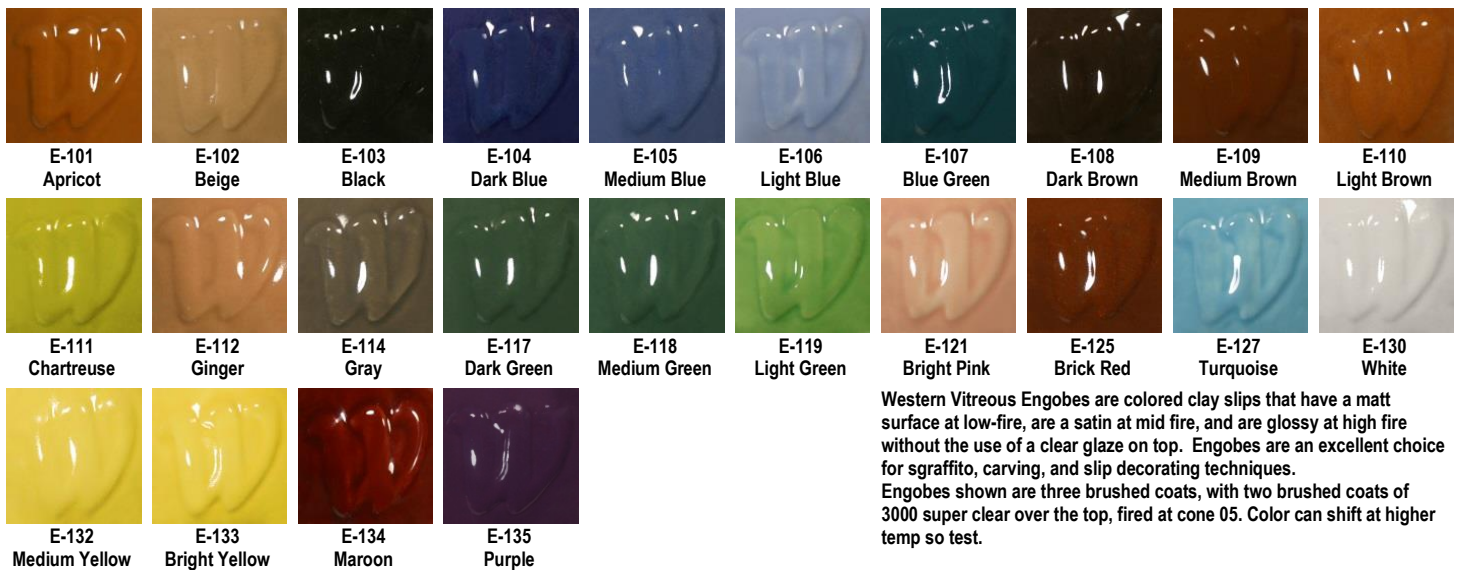
4581  
Spearmint Matt



## High Fire Stoneware Glazes – Cone 10 Lead-Free, Non Toxic, Food Safe – Tiles fired in Reduction unless specified with (ox)



## Engobe – Semi Opaque Vitreous Colored Slip – Cone 06-6 (Lead-Free - Non-Toxic - Safe for K-12 use)



## **SPECIAL ORDERS**

- All non-stock gallons of liquid glaze are available by special order with a 2 gallon minimum.
- 5 gallon pails of any color are available by special order.
- Please specify brushing or dipping form when special ordering liquid glazes.
- Lead time for lead free glazes: 2-3 weeks.

## **DRY GLAZE COLORS**

- Most Western colors are available as dry, unground glaze by special order.
- There is a 25 lb. minimum for dry glazes.
- Please specify brushing or dipping form.
- To mix dry glazes, most glazes require approx. 10-11 fluid ounces of water per dry pound (16 oz) of glaze. Add dry powder to measured water, sieve, test and adjust water as necessary and remix before glazing.

## **CUSTOM COLOR MIXING/MATCHING**

- Custom mixing services using your recipe, in dry or wet form, are available.
- Color matching and custom glaze formulation services are also available.
- Call for further details.

## **GLAZE LABELING GUIDE**



**LEAD FREE**



**WESTERN GLAZES ARE LABELED AS:  
NON-TOXIC OR CAUTION**

ONLY **NON-TOXIC** LEAD-FREE GLAZES ARE CERTIFIED FOR USE IN PUBLIC SCHOOLS. REFER TO INDIVIDUAL PRODUCT LABELS FOR PROPER HANDLING AND APPLICATION.

Unless otherwise noted (SEE \* (c) BELOW) all Western Ceramic Glaze, Engobe and Underglaze is certified Non-Toxic, Lead-Free, Food-Safe, and safe for use in K-12 classrooms.

**\*** Marked glazes are Lead-Free, and Non-Toxic, but due to soft or crackle surface; these glazes are not recommended for use inside food & drink containers.

**(c)** Marked glazes are Lead-Free, Non-Toxic, and Food-Safe when fired to proper maturing temperature, but contain copper or other soluble metal oxide and are only recommended for grades 7-12, not for K-6

Raku, Crackle, Lava, and Crawl Glazes are Lead-Free, but because they are crackle, have rough surfaces that may not completely cover, or contain excessive copper, they are not recommended for food and drink containers.

**DISTRIBUTED BY:**